

Successful retrieval of a  
dislodged coronary stent  
using 12-20mm EnSnare<sup>®</sup>  
through 7Fr Glidesheath Slender<sup>®</sup> at  
radial artery.

Saiseikai Kawaguchi General Hospital, Japan



Akira Wada, Akimistu Nasuno, Atsushi Takagi

# Background

- Coronary stent dislodgement is complication of percutaneous coronary intervention.
- Although the incidence of stent dislodgement has gradually decreased, dislodgement is still a potential cause of serious complications if it happens.

# CASE REPORT

60's y.o. Male

- **Target Lesion** : LAD(just proximal)
- **Diagnosis** : AP
- **Coronary Risk Factor** : Hypertension, Dyslipidemia
- **Previous PCI** : RCA(CTO), LADmid
- **LVEF** : 59% (inferior hypokinesis)
- **eGFR** : 80.0 mL/min/m<sup>2</sup>

# Relevant catheterization findings



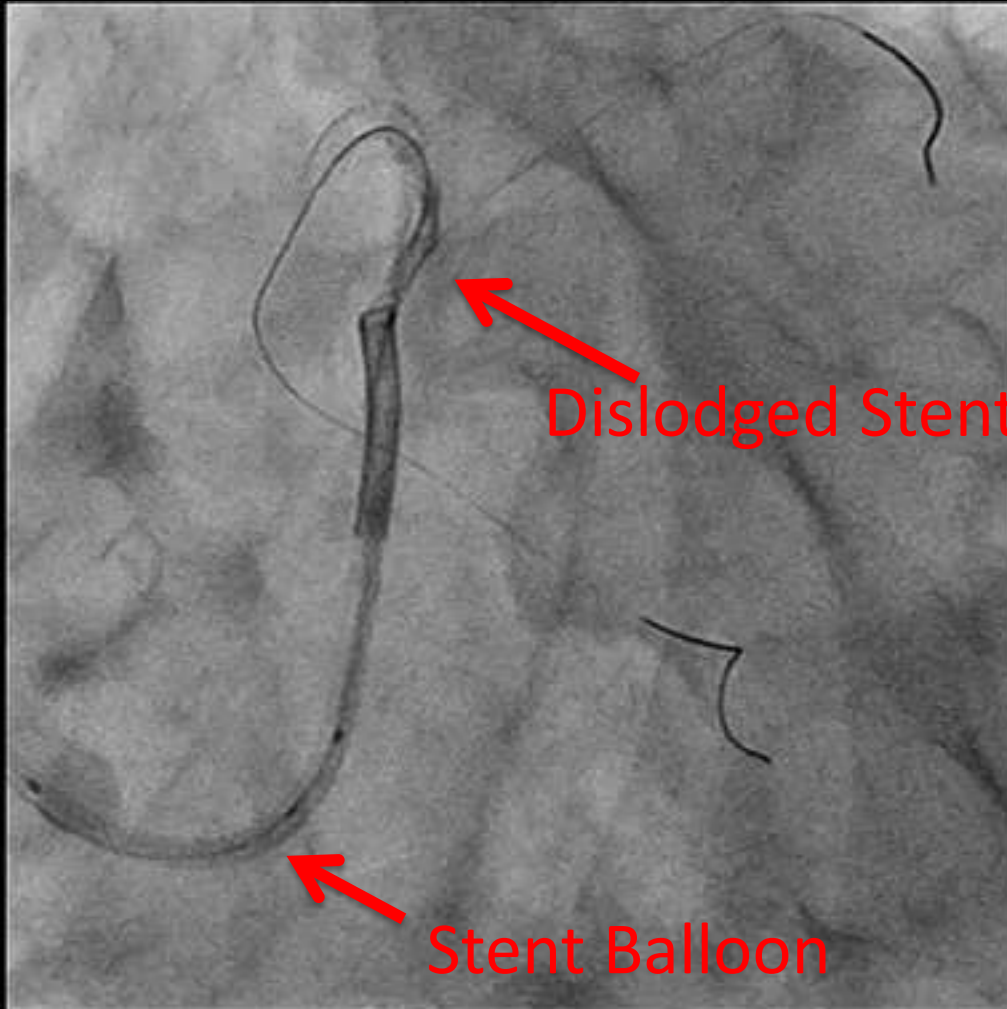
◆ App: Rt. TRA

◆ Sheath:

Glidesheath Slender<sup>®</sup> 7Fr

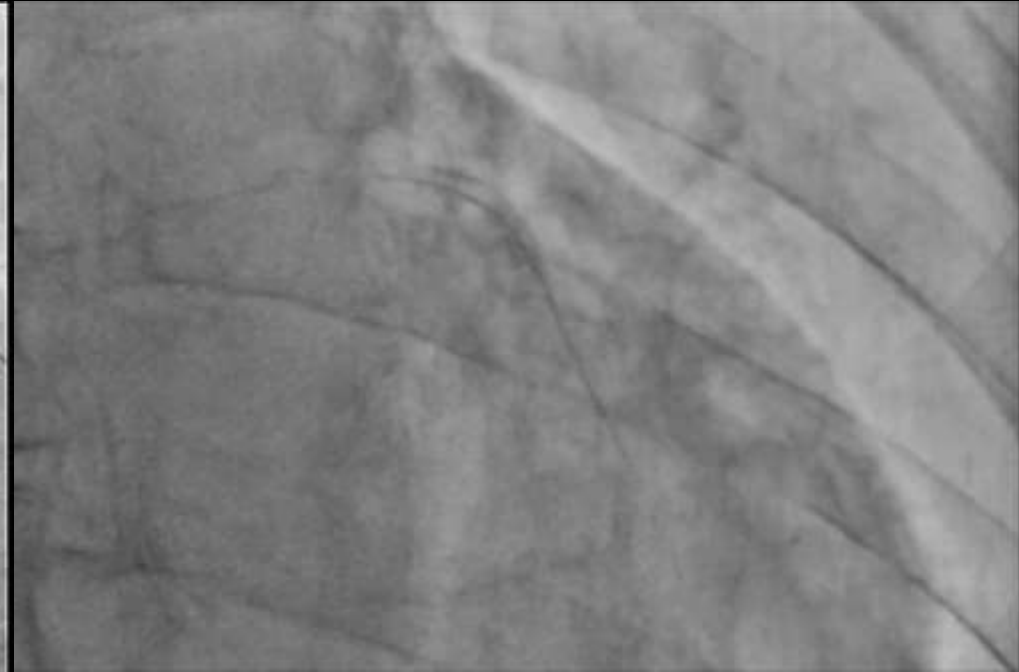
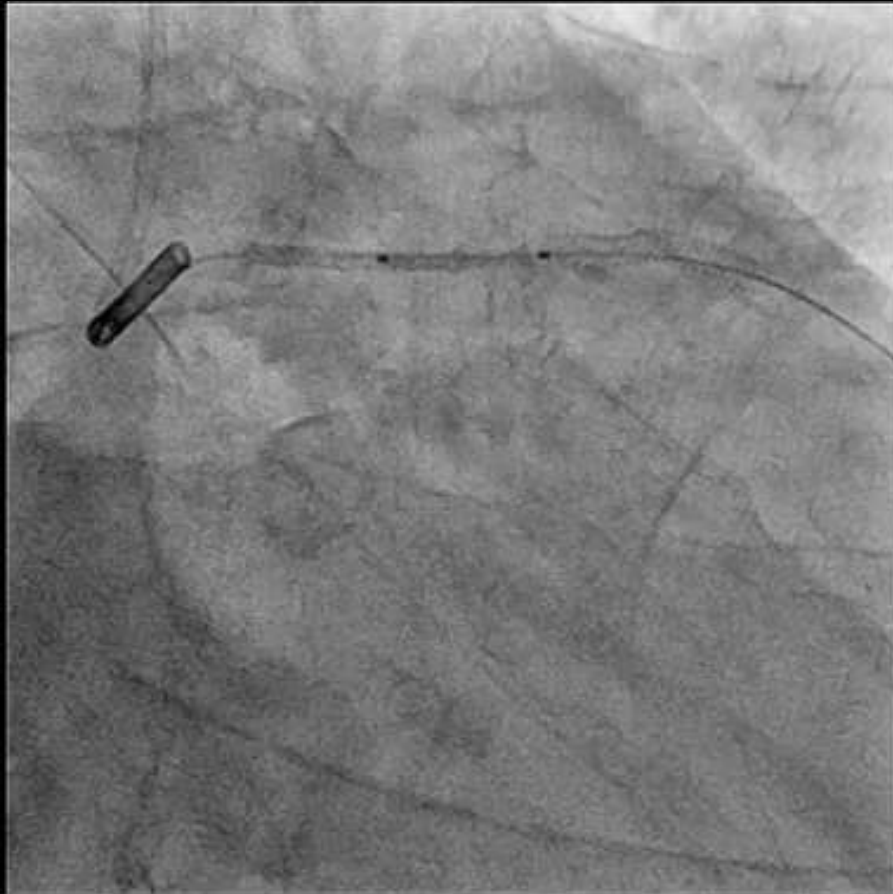
◆ GC: JL3.5 7Fr

# Stent dislodgement



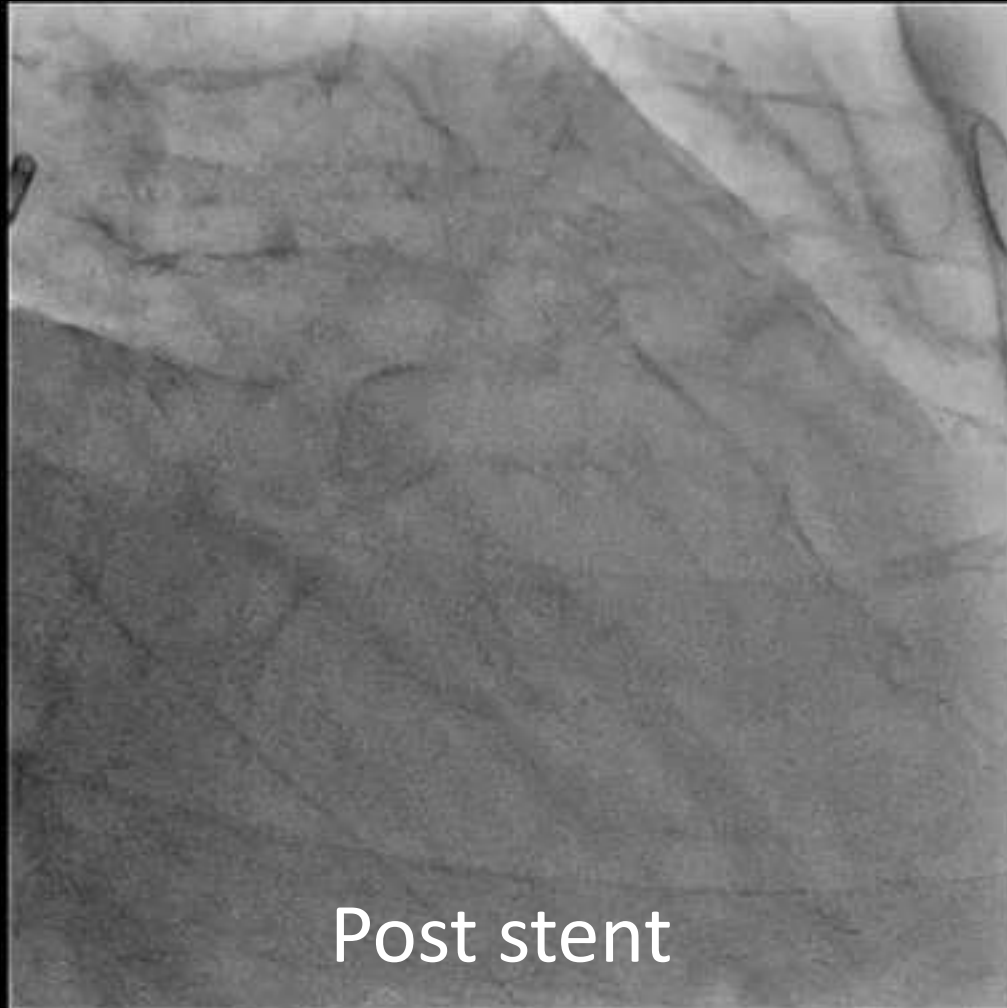
- ◆ GW:  
SionBlue<sup>®</sup> (LAD)  
Rinato<sup>®</sup> (Cx)
- ◆ STENT:  
Ultimaster<sup>®</sup> 3.5 × 28mm
- ◆ Not Coaxial : GC to LAD

# Retrieval : step 1



- App: Rt. TRA
- Sheath: Glidesheath Slender<sup>®</sup> 7Fr
- GC: JL3.5 7Fr
- Balloon : Tazuna<sup>®</sup> 2.0 × 15mm 4atm

# Stenting



◆ App: Rt. TFA

◆ Sheath: 6Fr

◆ GC: JL4.0 6Fr

◆ GW: Sion Blue<sup>®</sup>

◆ STENT:

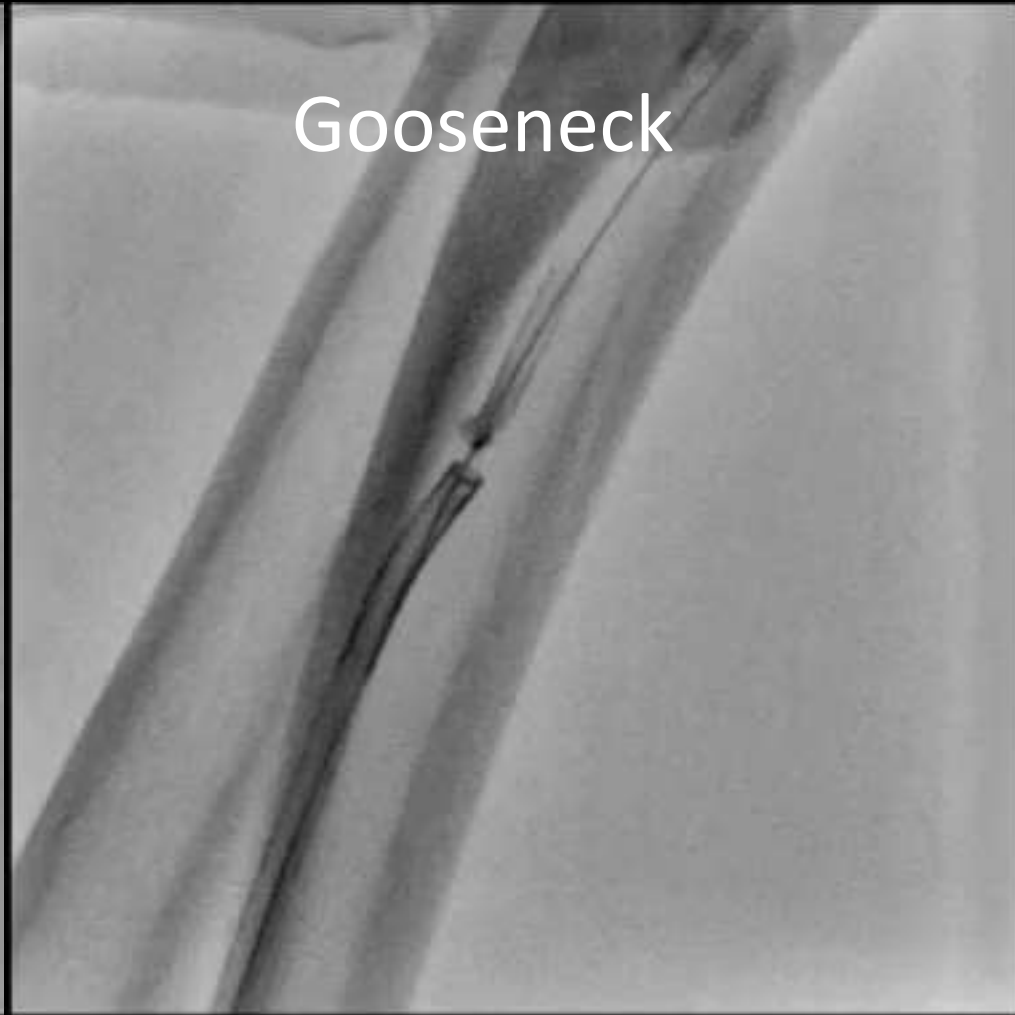
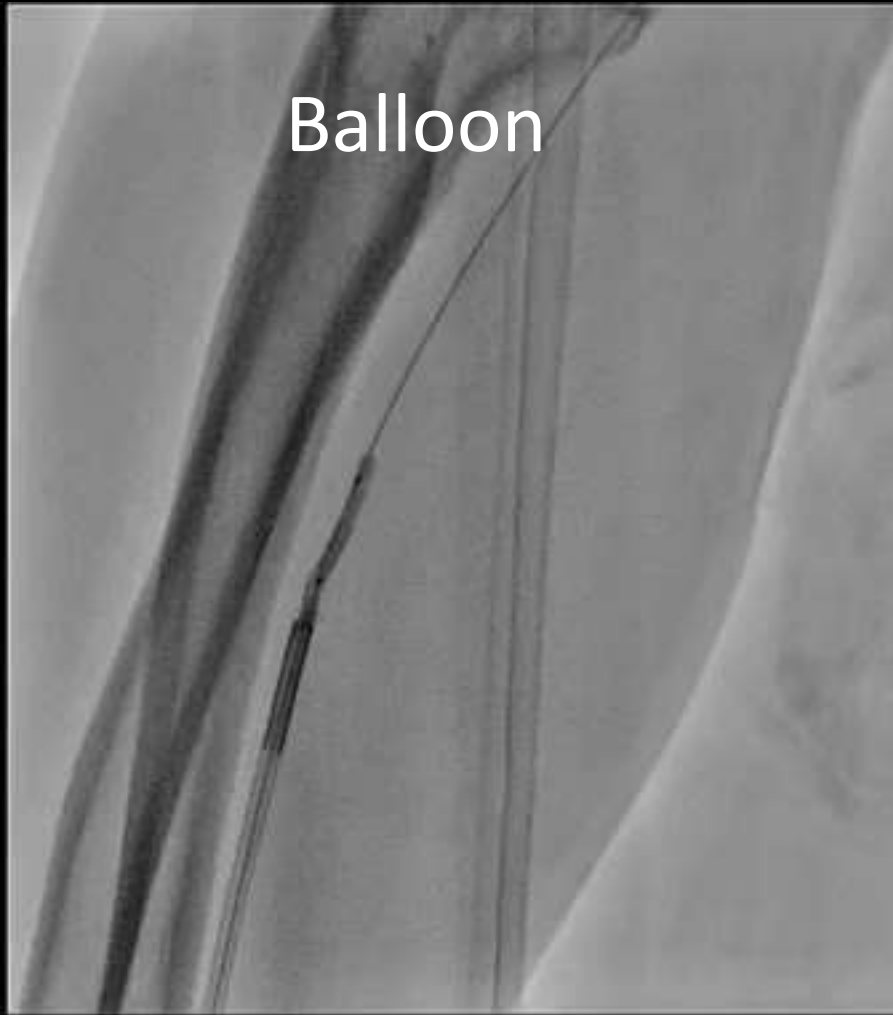
Ultimaster<sup>®</sup> 3.5 × 28mm

# Retrieval : step 2

## Failure

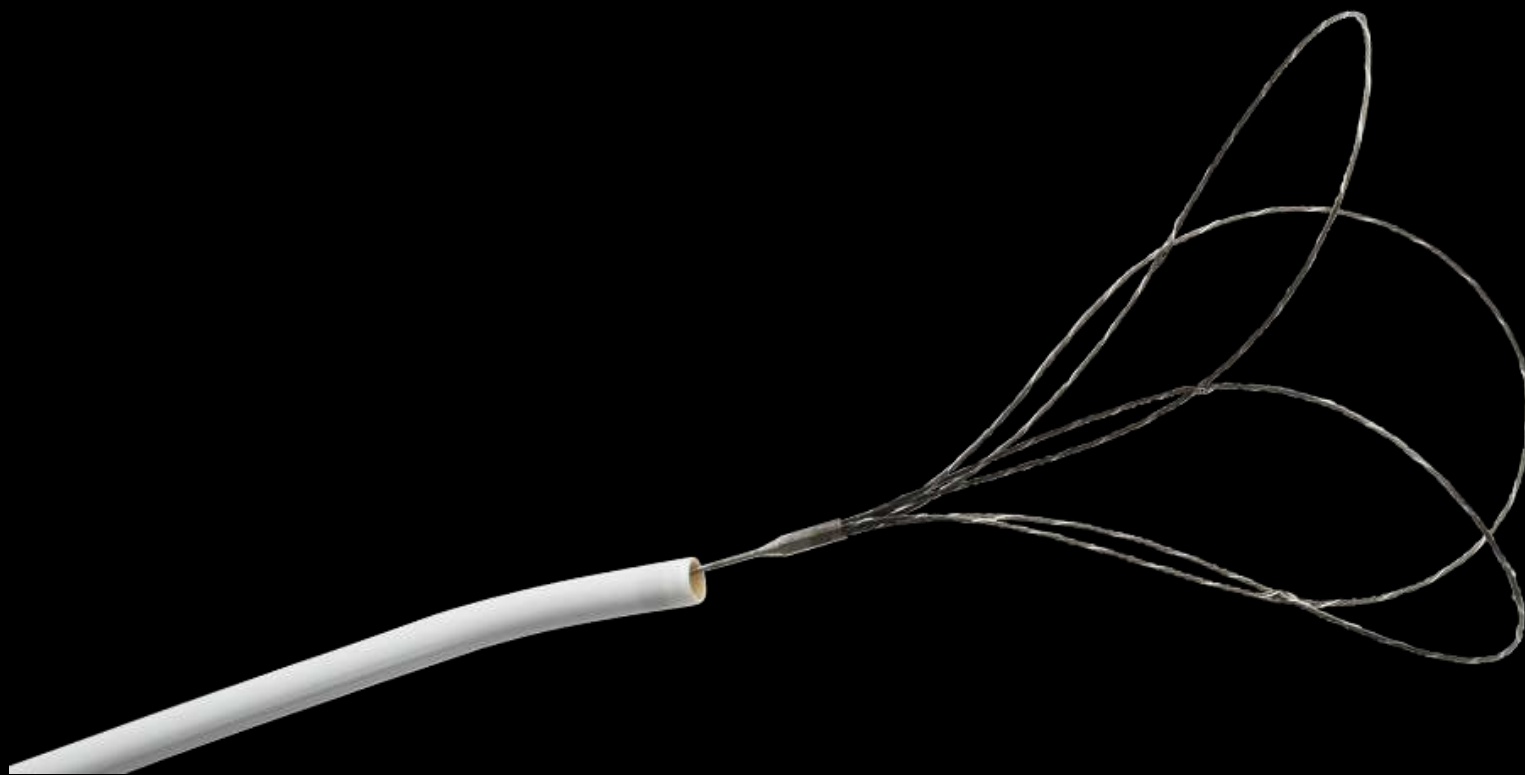
Balloon

Gooseneck





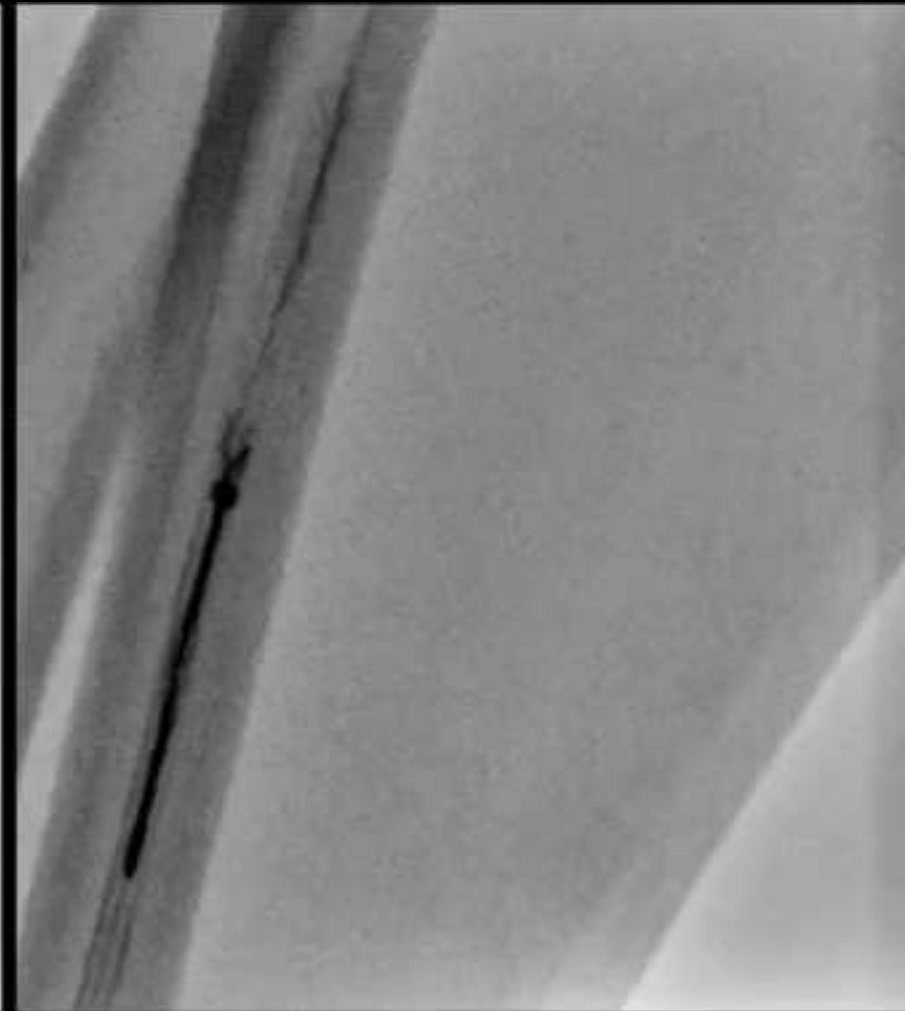
# EN Snare<sup>®</sup> 12-20mm



Retrieval : step 3

EN Snare<sup>®</sup> (12-20mm)

Sheath : Glidesheath Slender<sup>®</sup> 7Fr

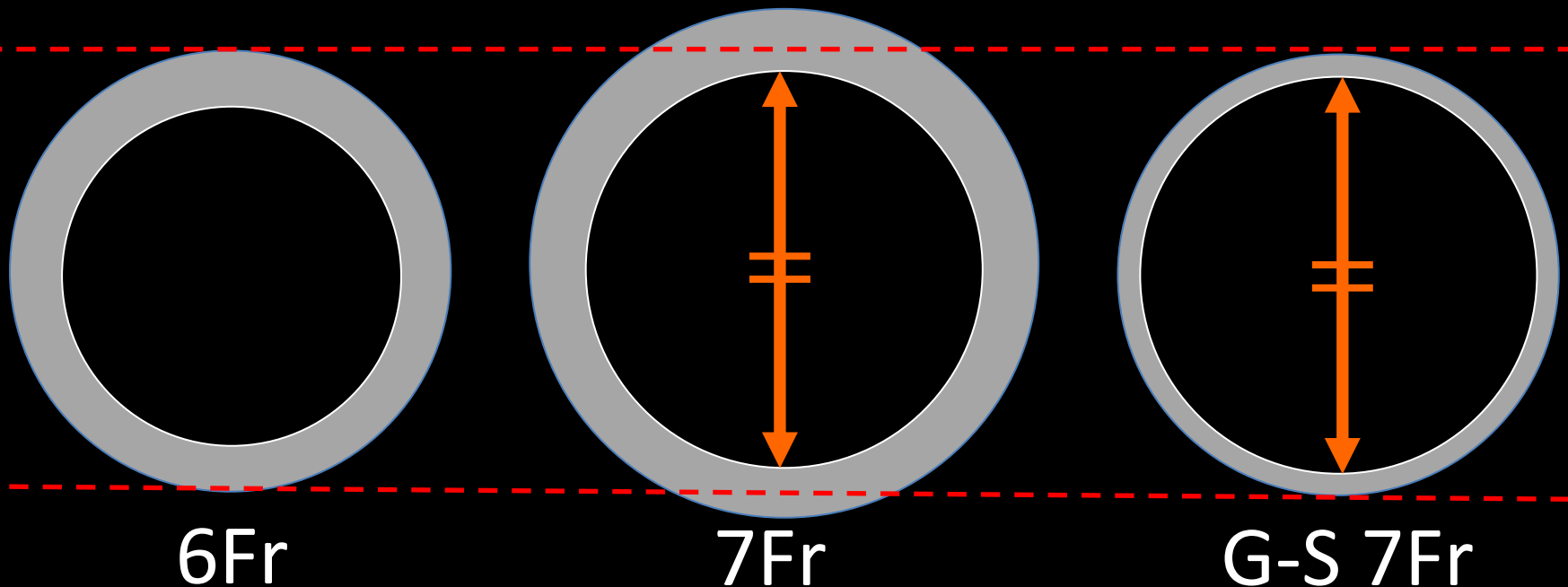


Tone off Gooseneck



# Glidesheath Slender<sup>®</sup>

- Perform diagnostic and interventional procedures without upsizing to a larger sheath.
- Ultra-thin wall leading to a 1Fr reduction in the outer diameter.



# Summary

- We experienced a dislodged stent in the proximal LAD.
- We proceeded 2 steps for the retrieval.
- 1st. Using a 2.0mm balloon, we pulled back the stent into the forearm artery.
- 2nd. Using a gooseneck snare<sup>®</sup>, however it was torn off.
- 3rd. we succeeded with the retrieval of the dislodged stent, using 12-20mm EnSnare<sup>®</sup> through 7Fr-Glidesheath-Slender<sup>®</sup> at the radial artery.

# Conclusion

- The combining of EN Snare<sup>®</sup> and 7Fr Glidesheath Slender<sup>®</sup> might be useful to retrieve the dislodged stent in a coronary artery.

Thank you for your attention